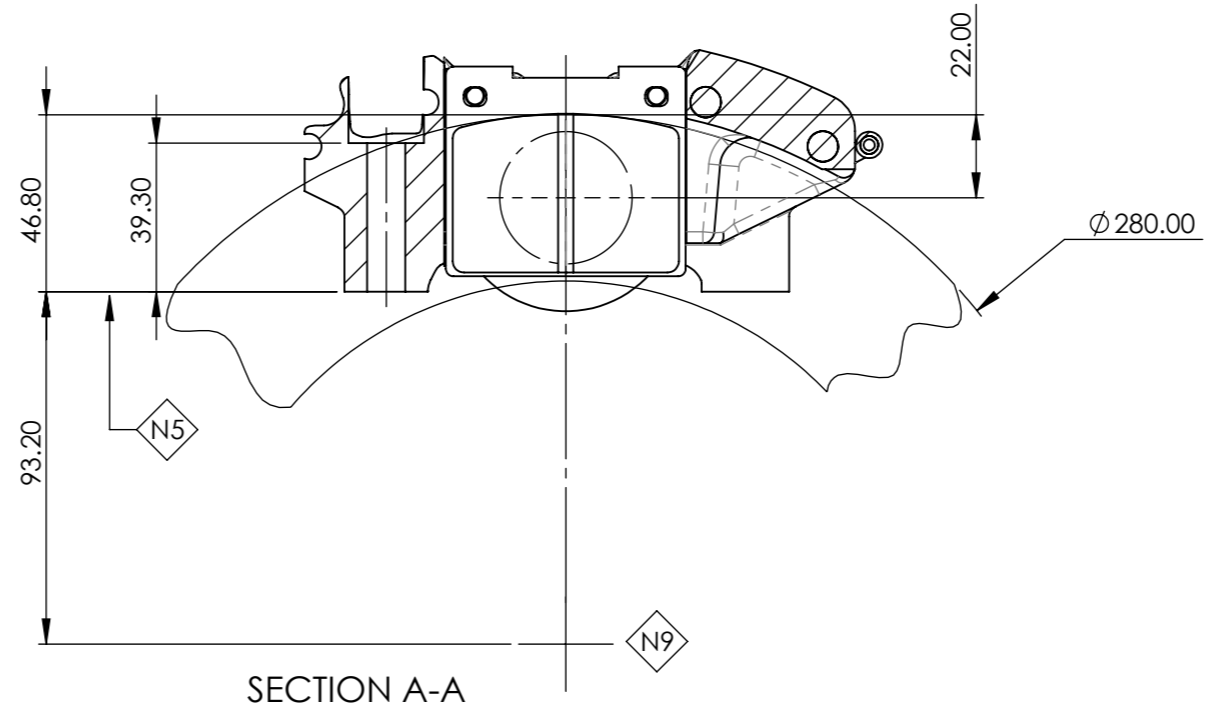
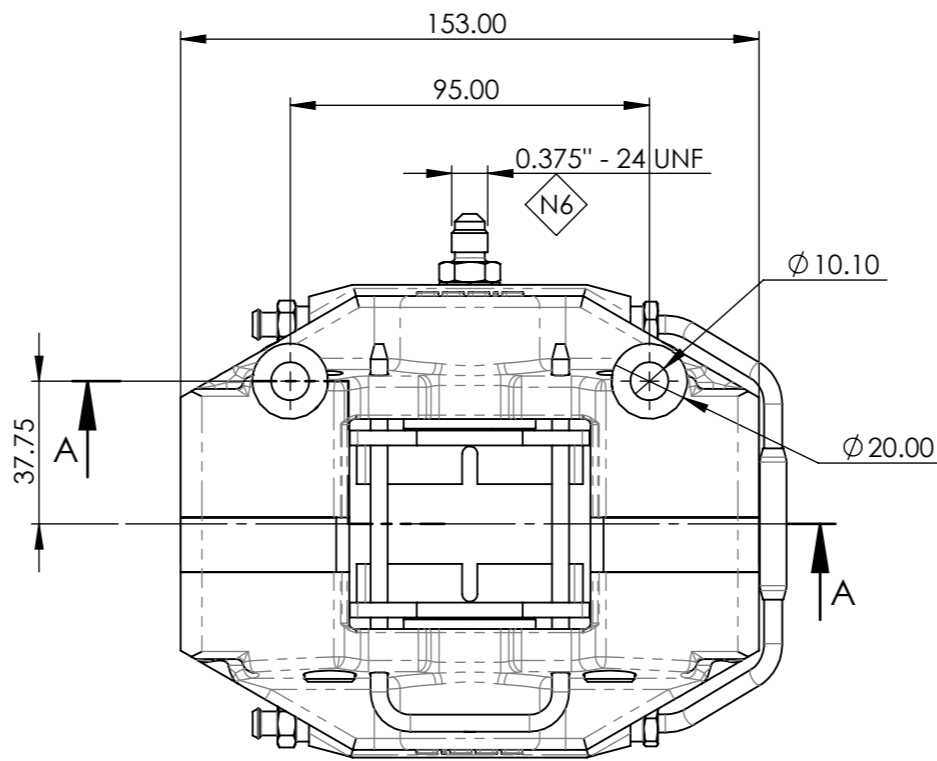
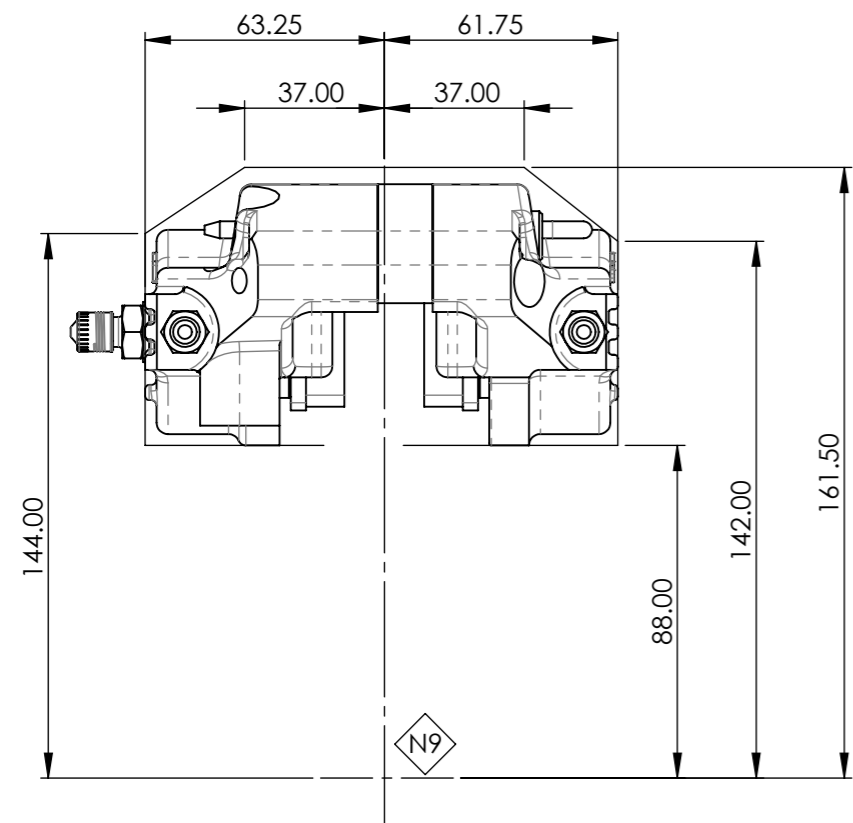


DO NOT SCALE  
IF IN DOUBT ASK

RADIAL PROFILE



NOTES:

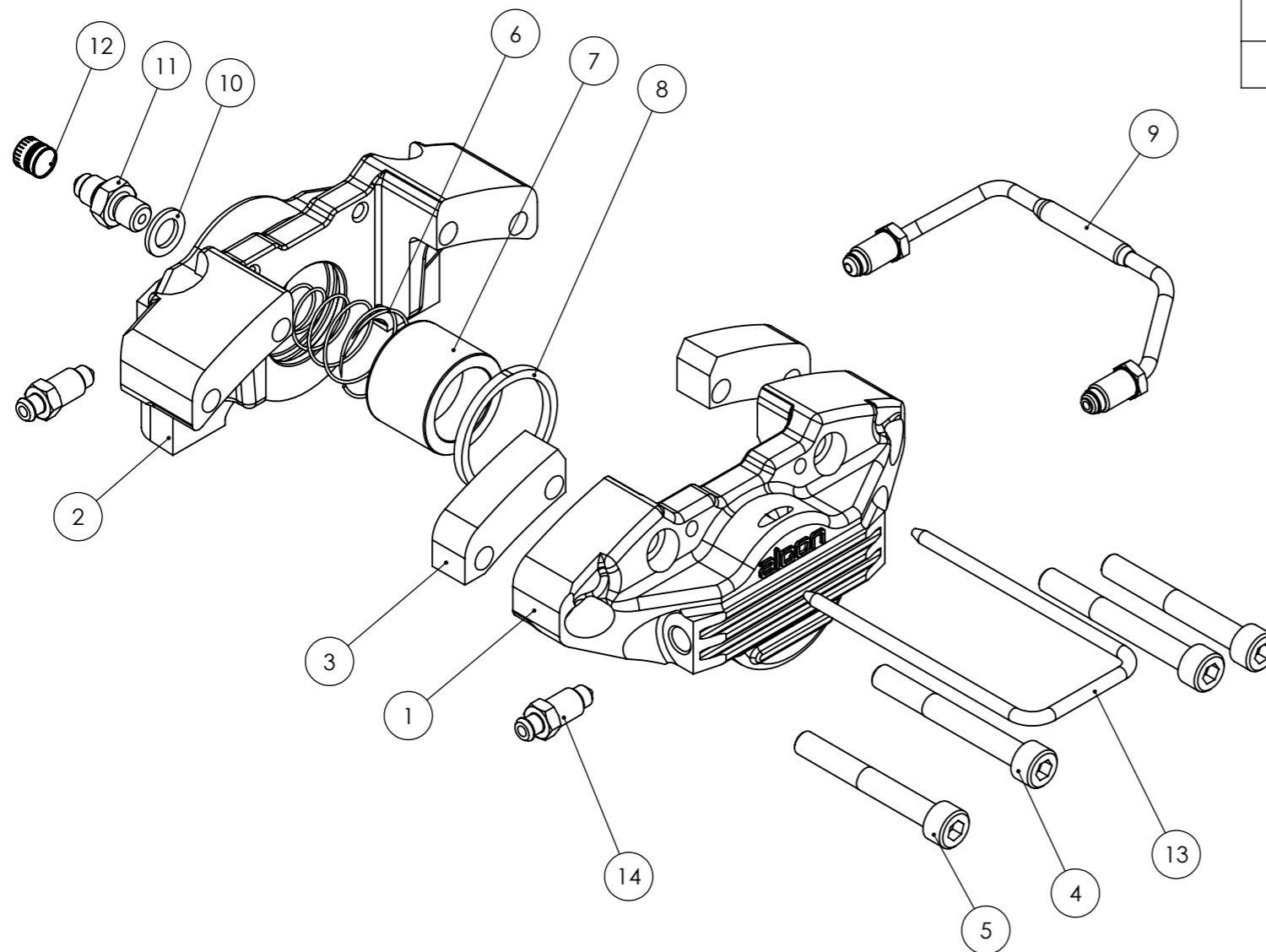
- N1: LEFT HAND TRAILING CALIPER AS DRAWN  
RIGHT HAND CALIPER SYMMETRICALLY OPPOSITE
- N2: BLEED SCREW: 3/8"-24 UNF, MAXIMUM TORQUE: 14Nm HOT  
18Nm COLD
- N3: INSTALL CALIPER WITH PAD 0.5mm ABOVE DISC &  
A MINIMUM CLEARANCE BETWEEN DISC & CALIPER OF 2.5mm
- N4: ALL DIMENSIONS ARE NOMINAL UNLESS OTHERWISE STATED
- N5: CALIPER MOUNTING FACE
- N6: HYDRAULIC FLUID INLET PORT
- N7: CALIPERS SUPPLIED LESS PADS
- N8: CALIPER ASSEMBLY WEIGHT (LESS PADS): 1.00Kg
- N9: DISC AXIS FOR SIZE: Ø280 x 25mm
- N10: ALL DIMENSIONS IN mm

Alcon Part No.	Hand	Orientation	Bore	Remarks
CRR280/25-35RT	RIGHT HAND	TRAILING	Ø 34.9	
CRR280/25-35LT	LEFT HAND	TRAILING	Ø 34.9	AS DRAWN

Issue		Change	LOC	DRN BY / Date	CHK BY / DATE	APP BY / Date
DRAWN IN SOLIDWORKS		SCALE: 1:2	APPROVED BY: T.McGEORGE	DATE: 07.07.22	DATE: 07.07.22	DATE: 07.07.22
WEIGHT: ... grams		MATERIAL: VARIOUS	APPROVED BY: G. WISEMAN	DATE: 07.07.22	DATE: 07.07.22	DATE: 07.07.22
REMOVE ALL SHARP EDGES, BURRS AND SWarf		FINISH: 3.2 Ra (0.8 Rg)	APPROVED BY: ...	DATE: ...	DATE: ...	DATE: ...
ALL DIMENSIONS ARE BEFORE TREATMENT UNLESS STATED		HEAT TREATMENT: ...	APPROVED BY: ...	DATE: ...	DATE: ...	DATE: ...
TOLERANCES UNLESS STATED		GEOMETRY EVALUATION: ...	APPROVED BY: ...	DATE: ...	DATE: ...	DATE: ...
R2.2 ANGLES: 81°P		APPROVED BY: ...	DATE: ...	DATE: ...	DATE: ...	DATE: ...
PART NAME: CALIPER ASSEMBLY		PART NUMBER: CRR280-25-35	REV: A	1 of 2	A3	

DO NOT SCALE  
IF IN DOUBT ASK

ITEM NO.	PART NUMBER	DESCRIPTION	QTY.
1	CAC7940D101	CALIPER COVER	1
2	CAR7940D102	CALIPER BODY	1
3	SAC3451X533	SPACER BRIDGE 14.5mm	2
4	BSS4441X616	M8 BOLT (65mm)	2
5	BSS0080X051D	M8 BOLT (60mm)	2
6	SSC3435X609	2kg ANTI-KNOCKBACK SPRING	2
7	PAS3435X556	Ø 34.9X26.6 PISTON	2
8	SES3500X751	Ø34.9 PISTON SEAL	2
9	PSC3451X652	PIPE ASSEMBLY	1
10	FCG0080X015	COPPER GASKET	1
11	FSA3435X630	3/8" UNF FLUID INLET ADAPTOR	1
12	BSC0080X1116	3/8" - 24 UNF THREADED SCREW CAP	1
13	SSR3451X605	SPRING PAD RETAINER	1
14	FSB0080X008	BLEED SCREW 3/8" UNF	2



DRAWN IN SOLIDWORKS WEIGHT: ... grams FINISH: 3.2 Ra (0.8 Ra) ALL DIMENSIONS ARE BEFORE TREATMENT UNLESS STATED TOLERANCES UNLESS STATED: ±0.2 ANGLES: 81°P 	SCALE: 1:2 MATERIAL: VARIOUS HEAT TREATMENT: ... SURFACE TREATMENT: ...	DESIGNED BY: T.McGEORGE DATE: 07.07.22 CHECKED BY: G. WISEMAN DATE: 07.07.22 PART NAME: CALIPER ASSEMBLY PART NUMBER: CRR280-25-35 SHEETS: 2 of 2 SHEET NO: A DESIGNED BY: ALCON COMPONENTS LIMITED APOLLO TAMWORTH STAFFORDSHIRE B79 7TN TEL: +44(0)1827 723700 
---	--	--